



Station House, Station Approach, West Drayton, UB7

- Station House
- Parking
- Furnished
- EPC Rating- E
- Two bedrooms
- Access to Train station
- Available for early April

£1,650 PCM



Cameron Estate Agents
195 High Street,
Middlesex, Uxbridge, UB8 1LB

E: uxbridge@cameron.co
T: 01895252000

www.cameron.co

Whilst every care has been taken to ensure the accuracy of these particulars, none of the statements contained herein are to be relied upon as representations of fact. These particulars do not constitute an offer or contract.

Description

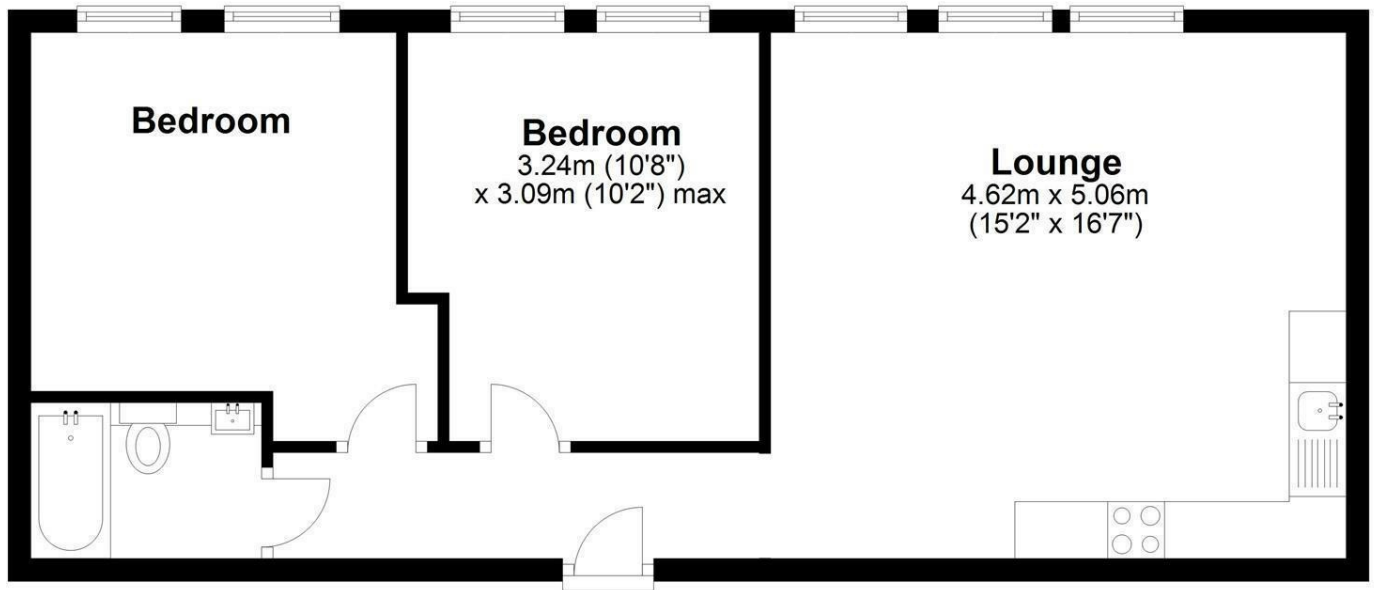
A great opportunity to take occupancy of this two bedroom apartment in Station House, West Drayton located on the high street and moments away from the West Drayton station. Furnished and available for early April.

IMPORTANT NOTICE

These particulars have been prepared upon information supplied by the Vendor and should be verified by your surveyors and solicitors. In accordance with the Property Misdescriptions Act 1991 we have prepared these sales particulars as a general guide to give a broad description of the property. They are not intended to constitute part of an offer or contract. We have not carried out a structural survey and the services, appliances and specific fittings have not been tested. All photographs, measurements, floor plans and distances referred to are given as a guide only and should not be relied upon for the purchase of carpets or any other fixtures or fittings. Lease details service charge and ground rent (where applicable) are given as a guide only and should be checked and confirmed by your solicitor prior to exchange of contract

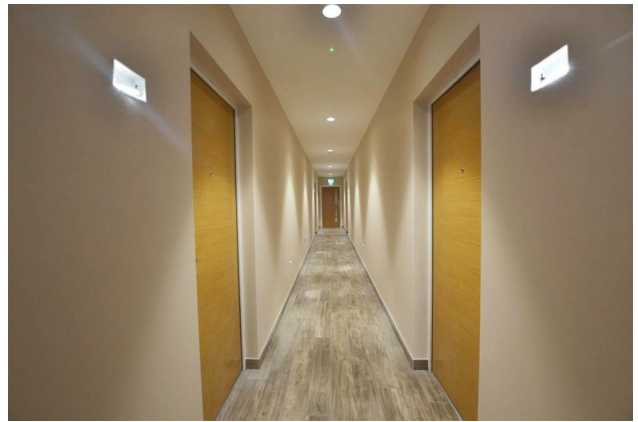
Third Floor

Approx. 51.9 sq. metres (558.9 sq. feet)



Total area: approx. 51.9 sq. metres (558.9 sq. feet)

Cameron



Whilst every care has been taken to ensure the accuracy of these particulars, none of the statements contained herein are to be relied upon as representations of fact. These particulars do not constitute an offer or contract.